

Bear Rub Trend Monitoring

- Genetic results from samples collected at bear rubs in 2010 identified 335 individual grizzly bears. This represent approximately 1/3 of the population and reflect the power of this method to track population trajectory.
- We are currently completing the 2nd of 3 collections we will conduct in 2011 at the ~5,500 bear rubs we monitor in the greater Glacier NP ecosystem. We expect to sample a similar portion of the population this year.

Remote Camera

- 6 Reconyx rapid fire remote still cameras were purchased summer 2010.
- They were acquired to investigate nocturnal activity at bear rubs and to increase the probability of recording female and cub use of rub sites. These cameras excel at taking both night and day photos and are very user-friendly to setup .
- In July, we obtained the first photo documentation of family groups rubbing at a mark site.
- The scientific significance lies in knowing that all age classes participate in rubbing which is important in designing a noninvasive sampling trend monitoring program and cannot be learned from genetic analysis.

For additional information, contact:

Kate Kendall, Project Leader
kkendall@usgs.gov • 406-888-7994



Noninvasive Methods for Monitoring Bear Population Trends

The U.S. Geological Survey began a grizzly bear research project in 2009 in the Northern Continental Divide Ecosystem (NCDE) of northwestern Montana. This work uses hair collection and DNA analysis methods similar to those used in the 2004 Northern Divide Grizzly Bear Project. However, instead of producing a snapshot of population size, the objectives of this new work are to estimate population growth rates by collecting hair at natural bear rubs along trails, roads, and fence and power lines. This approach holds promise of providing reliable estimates of population trends in an efficient, cost-effective, and unobtrusive way.

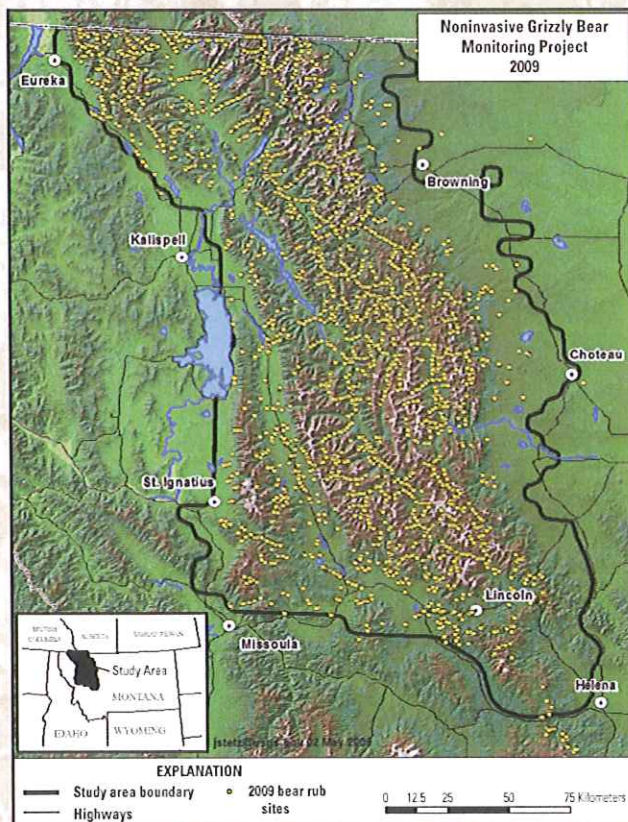


Bear rubs and other passive hair-collection opportunities occur on all types of lands found in the NCDE: forest and prairie, public and private, front and back country. Bear rubs are found by hiking forest trails, roads, and power and fence lines. Short pieces of barbed wire were attached to the rubbed surface to facilitate hair collection at most sites; however, barbless wire is used on trees bumped by pack animals. *No lure or attractants were used to attract bears to these sites.* Genetic analysis of the hair reveals the species, sex, and individual identity of the bears using rub trees. We use this information in mark-recapture models to estimate population growth and survival rates, along with other valuable information.

2009 Update

We conducted field work from mid-May into early October in our 8.5-million-acre study area in 2009. We identified 4,907 bear rubs from which we collected 9,240 bear hair samples. Genetic analysis identified 258 individual grizzlies that had deposited the hair. Field work will continue through 2011. An evaluation of the effectiveness of monitoring bear population trend using this approach will be conducted in 2012.

Timeline	2009	2010	2011	2012
Identify/setup bear rubs	→			
Hair collection	→	→	→	
Genetic/data analysis		→	→	→
Prepare manuscript				→





Surveying bear rubs is safe, efficient, and consistent with wilderness "minimum tool" requirements. Further, no trapping or overflights are required, surveys can be conducted on established travel routes, grizzlies and black bears are sampled concurrently, and bear behavior is not affected by the presence of bait or lure. Because field sampling methods require little training and experience, there is potential to reduce monitoring costs through assistance by existing agency personnel and volunteers. Remote camera footage of bears at rub trees can be viewed on the USGS Web site: <http://www.nrmc.usgs.gov/research/KendallRemoteCamera.htm>



Our previous work demonstrated that collecting hair from bear rubs can sample a large portion of the population. In 2004, nearly 13,000 hair samples were collected from 4,795 bear rubs. From these samples, we detected more than 50 percent of the males and more than 25 percent of the female grizzlies in the population. This was despite not being able to conduct sampling on 20 percent of the NCDE and not sampling in late summer when female rubbing behavior peaks. We can use these detections to look at fine-scale patterns in this population, including changes in how bears are distributed on the landscape, and if there are any barriers to interbreeding (that is, geneflow) within the NCDE. By surveying bear rubs throughout occupied range and over a longer sampling season, we expect to detect even more grizzlies than the 275 individuals detected at bear rubs during 2004 once a sampling network is established. More detections allow us to make more reliable inferences about how this population is faring and assess progress toward recovery.

For more information, please visit the project's Web site: http://www.nrmc.usgs.gov/research/NGSbear_monitoring.htm

